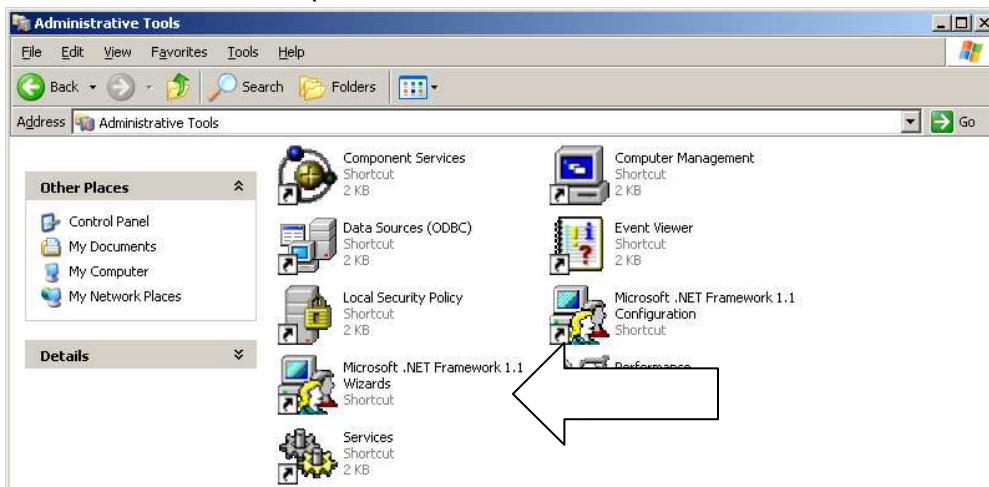


MICROSOFT .NET SETUP

Newtin software requires that users have the .NET software loaded before it can be used.

To see if .NET is installed:

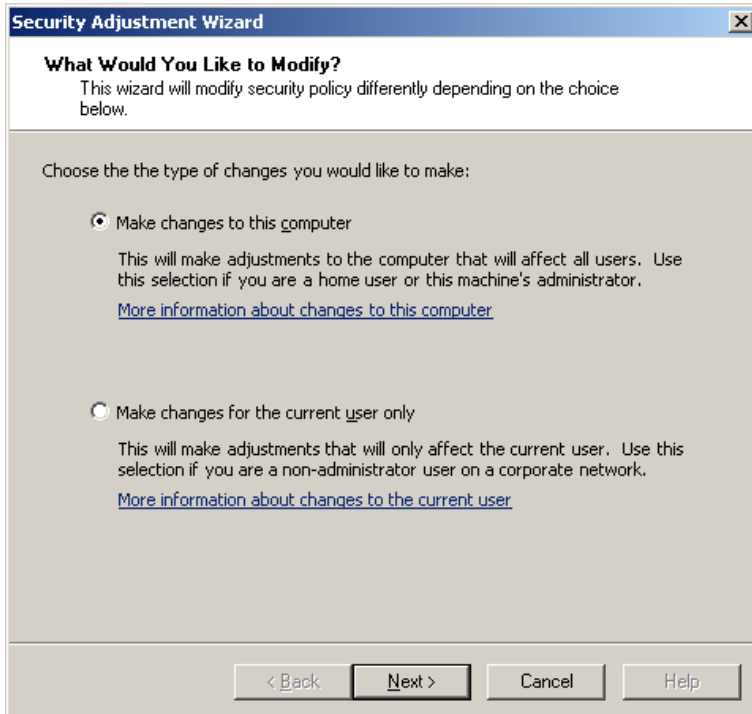
1. Click on Start button, go to Control Panel and choose Add/Remove Programs.
2. Scroll down to see if Microsoft .NET Framework 1.1 has been installed. If so, skip to item # 4.
3. If .NET has NOT been installed, go to www.microsoft.com/downloads, type “.NET” in the Search field (do not include the quotation marks!), choose the Version 1.1 package and begin the download process. Answer prompts with either “Run” or “Yes” as the installation takes place.
4. Once you know .NET has been installed, return to the Control Panel and choose “Administrative Tools.” (If the computer is running XP and the Control Panel is in Category view, choose “Performance and Maintenance” and then pick “Administrative Tools.”)
5. You will see 2 .NET options. Double-click on the Wizards tool.



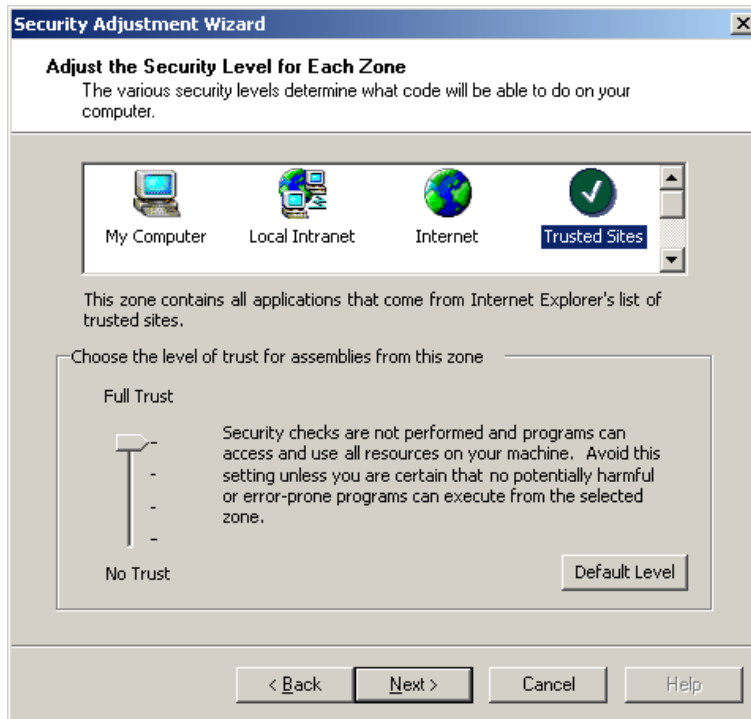
6. A new box will appear, click once on “Adjust .NET Security.”



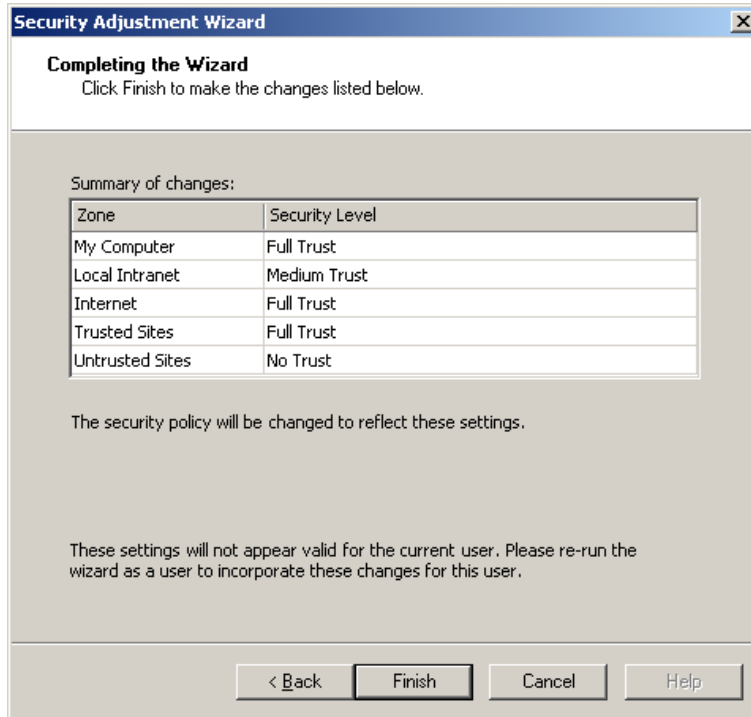
7. Choose “Make changes to this computer”, then press “Next”.



8. Click on “Trusted Sites” icon, then move slider to “Full Trust”. Click on “Next.”

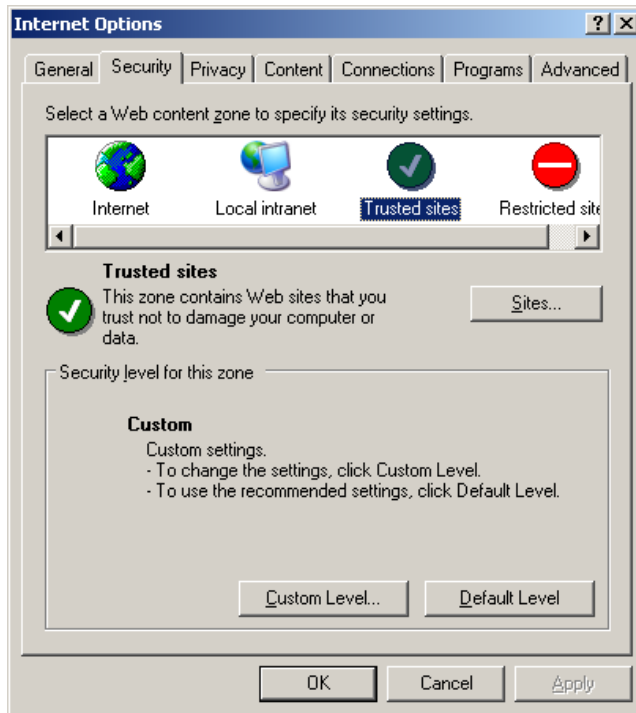


9. Make sure Security Level for Trusted Sites says “Full Trust” in Summary, then click on “Finish:.”



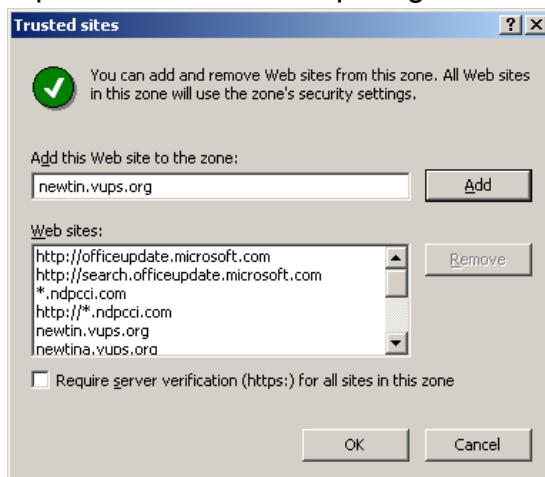
10. Now open Internet Explorer, click on “Tools” on the Menu bar and select “Internet Options.
11. Choose the Security Tab.





12. Click on the Trusted Sites Icon, then click on the Sites button.

13. Make sure the “Require server verification (https:) for all sites in this zone” box is unchecked. Type “newtin.vups.org” in the “Add this Web site to the zone” box and press the “Add” button. Also type “newtina.vups.org”, add that and then repeat with “newtinb.vups.org”.





14. Click on OK, then click on second OK button.
15. Close Internet Explorer, then reopen and try to log into Newtin.

